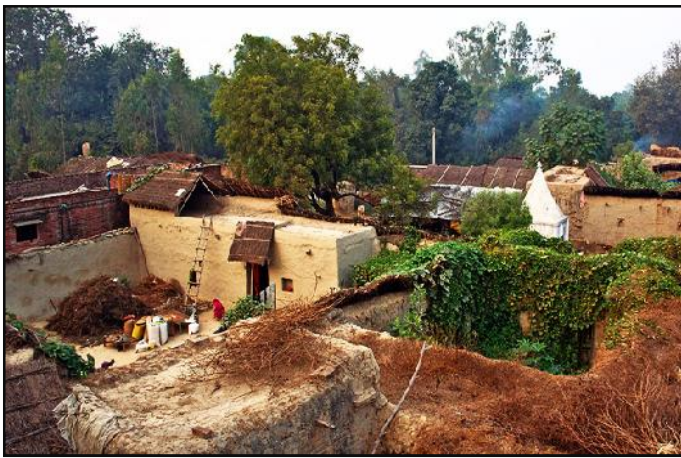




GRAMYA SANSTHAN



(A Rural Initiative Towards Sustainable Development of the People)

About us:

GRAMYA SANSTHAN is a not for profit, Non governmental, Non-political Organisation registered under the Societies Registration Act, 21 of 1860 with its registered office at Varanasi. Gramya is also registered under FCRA, 1976 and 12A of the Income Tax Act. Registered in the year **1992**, Gramya started its working in the most backward, isolated and tribal populated block Naugarh (formerly a block of Varanasi district) now in district Chandauli. GRAMYA is a female-headed organization and ensures equal representation of women at all levels.

VISION: To build homogeneous, egalitarian and equitable society where poor, oppressed and women community, equally participate in the process of decision making.

MISSION: The mission of the organization is empowering marginalized and socially excluded people with focus on women and children to make them capable in leading their process of development and effective participation in the decision making.

Programmatic focus of GRAMYA:

- i. Women Empowerment in socially excluded communities*
- ii. Rights of Workers in Unorganized Sector*
- iii. Child Rights*
- iv. Rights of Adolescents girls and Youths*
- v. Gender equality & violence against Women*
- vi. Rights of marginalised and Socially Excluded communities*

Geographical Coverage:

In Uttar Pradesh:

- **District: Varanasi:**
Block: (i) Sewapuri and (ii) Baragaon
- **District: Chandauli:**
Block: (i) Naugarh, (ii) Chakiya, (iii) Shahabganj and (iv) Niyamtabad
- **District: Sonebhadra:**
Block: (i) Nagawa
- **District: Allahabad**
Block: (i) Shankargarh

Total village coverage: 274 in 4 Districts.

Total Block Coverage: 8 nos. in 4 Districts.

PROGRAMMES HIGHLIGHTS:

Community Mobilization: GRAMYA has a rural entity and works in the most backward villages in aforesaid districts amid the poor and marginalized community with a focus on



women's issues and their rights, children & mother's welfare. Community mobilization comes first to implement any project's activity. We have a very good rapport among the target community people we are working with for many years. This includes community level meetings, IEC activities for mass awareness on certain issues e.g. children's & women rights, various Govt. Prog. & schemes like MNREGA, NRHM, RSBY, Govt. Acts i.e. RTE 2009, RTI etc.

Women Empowerment: GRAMYA is a female headed organization and we are primarily concerned with women. Identifying issues from women's perspective, promoting collective actions by their forums, imparting necessary knowledge, facilitation to solve it



by concerning authority, linking them with relevant groups and networks and raising their voices through representation of the organization staff at block & district levels

are some of the interventions. Fighting against all sorts of exploitation and enabling access to the rights & entitlements are the key concerns. Over the years, there has been good progress in this segment.

Formation & Strengthening of CBOs:

Unity is Strength is a Universal fact. Keeping in view, we always emphasis to mobilize the community people into the



different groups. Till the time, there are many women's groups that are formed also called **Mahila Manch** from socially excluded communities. They are now emerging as a change vehicle in villages and raise their voices on their basic rights and Govt. services for Health, Nutrition, Education, MNREGA and other issues. Collective actions are taken on such issues and it's quite effective. Youth Groups, Adolescent Girls Group are also being formed in different villages in project areas and they are mentored to take initiative for bringing a lasting change in the society.

RSBY Initiatives: We have started RSBY



interventions amid great difficulties when there was abundance of corruption and malfunctioning at several levels.

Community people were almost disinclined towards Smart Card enrollment. By the time, we have been successful in regaining of the community people's faith while making rigorous efforts at village, block and district level for a long time. Now, it's a very remarkable achievement for our organization that not only enrollment percentage got increase but also Smart Card use and its claim also enhanced that was sometimes never before to the target community.

Advocacy level Initiative: To raise the concern by the community people is not enough until it reaches to the higher level where policy makers can admit it. With the same perspective, we are constantly working



on advocacy level initiative. For instance, we share the status of govt. department services e.g. ICDS, Health, RSBY, MNREGA, School Education, service providers role through Block & District level dialogues with the govt. officials for their support & taking appropriate actions as required in common interest. Sometimes, it reaches to State level.

Non-Formal School Education (NFE): In some remote villages, either school are situated far away or parents or guardians are not ready to send their girls in the formal school due to old beliefs, engaging them in household works e.g. looking after younger siblings and sense of insecurity as well. So, the organization has initiated some NFE for the adolescent girls & boys both in Chandauli District. They are grouped on the basis of their age appropriate learning level. There are total 18 Non-Formal Education Center is running.

Quality Education to the Children: We are also working on the issues of Quality Education to the children. Prime focus have been on RTE Act-2009. For this organizing awareness rally, campaign for increasing



school enrollment, training of SMC members, meeting with the school teachers, support to the poor families and motivating them to send their children's regularly are some of our interventions in said context.

Training & Capacity building: It has been integral part in our works. We have already organized trainings and workshops on



various issues over the years. Training to the Groups Leaders from Mahila Manch, Youth Groups, SMC, RSBY Mitra are some of them. It helps to enhance their knowledge and confidence. Initiatives have taken by women leaders, youths and RSBY Mitra on the issues is good & reflects sign of change. They support in our works in various ways. We are developing youths as support hand in local community to sustain the process.

Organizing Special Days/Events: Time by time, GRAMYA also organize big events e.g. Jan Utsav (Celebrating Community Voice), May Day, Women's Day, Mahila Sammelan, Earth Day, Children's Day, Youth Day, International Youth Day, Gandhi Jayanti,



Ambedkar Jayanti, Teacher's Day, the Independence Day, the Republic Day and other such important day are organized by the support of community people. Different types of activities e.g. cultural programme, group songs, dance, painting & poster competition make these days very special to remember in memories.

Promotion of Collective Actions: By the support of formed community based organization, collective actions on local issues are taken in common interest. There is



good proportion of the poor & marginalized sections of people in the target area. The motto behind these actions is to ensure all sorts of govt. benefits they are entitled for.

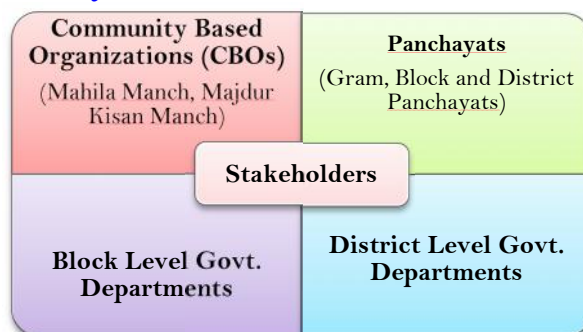
Learning:

- ✓ *Women's leadership is key to their empowerment.*
- ✓ *People's participation raises Govt. accountability*
- ✓ *Beneficiaries should have appropriate knowledge to claim their rights and entitlements.*

✓ **Community Forums:** Over the years we have formed following CBOs in target area:

- **Mahila Manch:** 93 nos. and membership of 1064 women
- **Majdoor Kisan Manch:** 32 nos. and membership of 545 nos. (men, women & youths)
- **Mahila Majdoor Yuva Manch:** A district level federation of men & women.

Our Key Stakeholders:



GRAMYA Partners: We are join hands with following funding agencies:

- PACS
- ASHA For Education
- TDH
- Action Aid

Membership & Networks:

- AALI: Association for Advocacy and Legal Initiatives
- INSAF: Indian Social Action Forum
- DAG: Dynamic Action Group
- WHRAP: Women's Health and Rights Advocacy Partnership
- SAHAYOG:

Results:

- ✓ *Socially Excluded Community empowerment*
- ✓ *Increase in non-discriminatory access to govt. services e.g. health, education, nutrition etc.*
- ✓ *Recognition of GRAMYA works at govt. level*
- ✓ *Representation of target community is increase in govt. committee, decision making process.*
- ✓ *RSBY Mitra support in RSBY works*
- ✓ *Women's capacity increase to discuss on issues*
- ✓ *Youths are now aware on many issues.*
- ✓ *Women empowerment in deprived community*

Contact Details:

GRAMYA SANSTHAN

L-40, V.D.A. Colony, Chandmari, Lalpur II, P.O.- Sarnath (Lamhi)-Varanasi-U.P.- India, PIN: 221007

E-mail: bindu.gra@gmail.com,
gramyasansthan@gmail.com

Phone No. 0542-2290120, Contact No.: 9415222597

Website: gramyasansthan.org